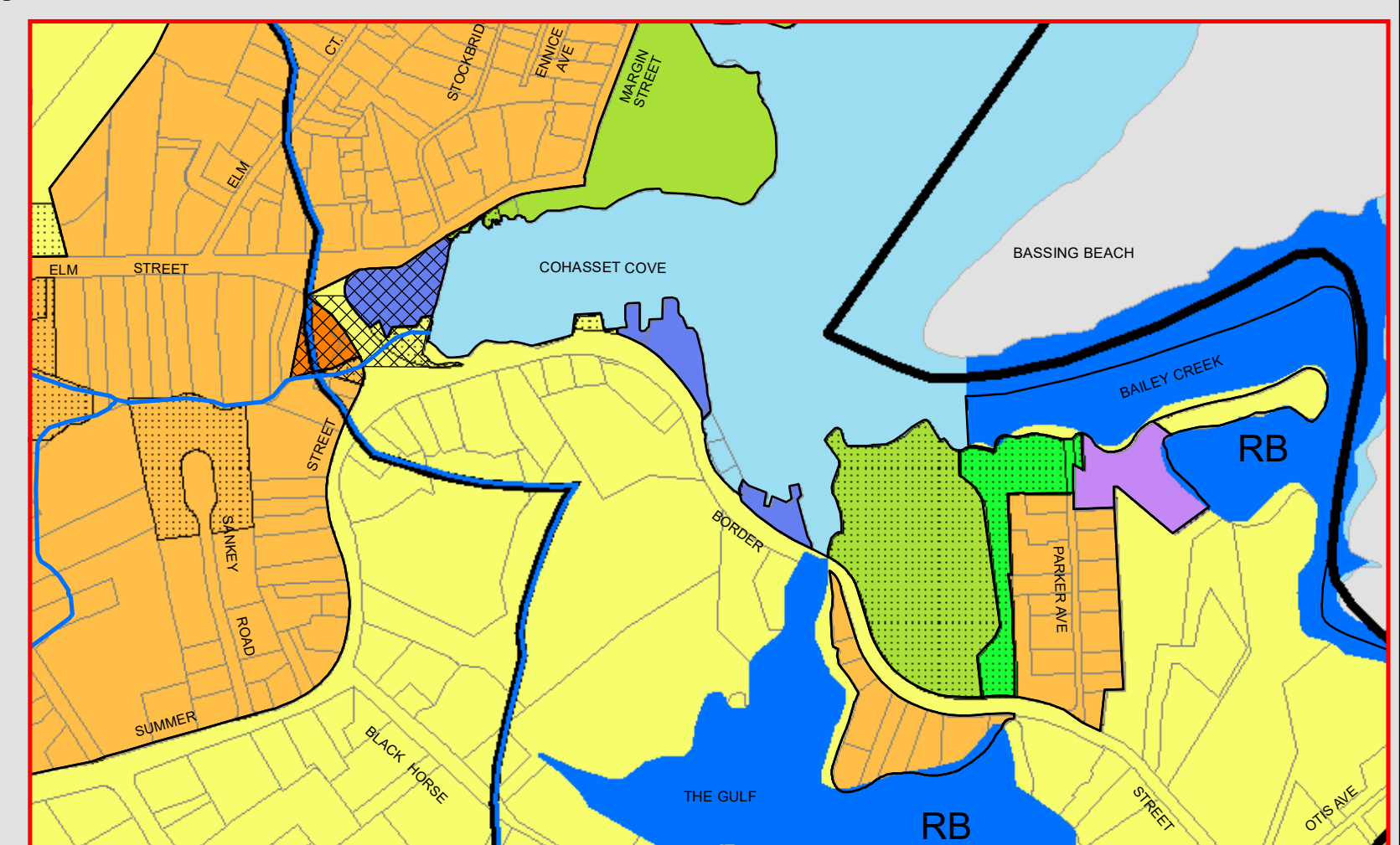
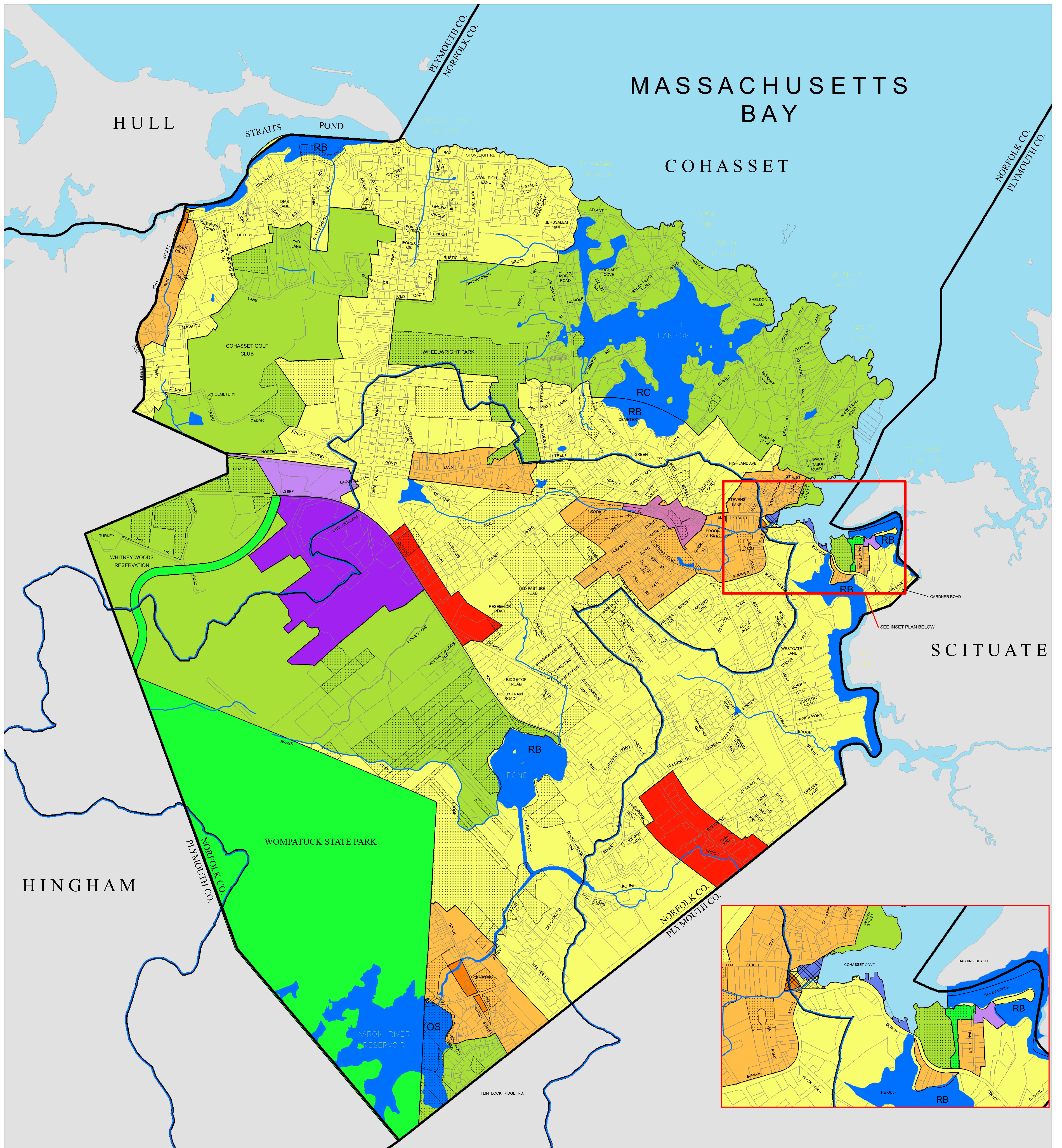
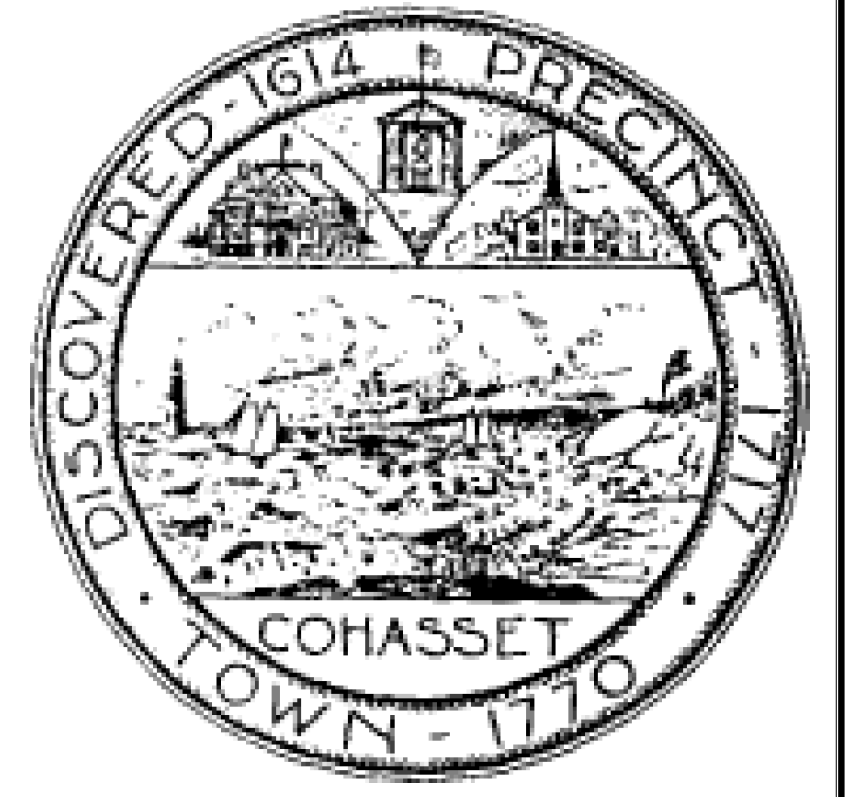


TOWN OF COHASSET MASSACHUSETTS ZONING DISTRICT MAP MAY 2021



- NOTES:**
1. MAP PROJECTION IS NAD 83, MASSACHUSETTS STATE PLANES, MAINLAND ZONE, US FOOT.
 2. CORPORATE BOUNDARIES, HYDROGRAPHY, PARCEL & RIGHT-OF-WAY DATA DOWNLOADED FROM MASS GIS. PLEASE NOTE ONLY MAJOR HYDROGRAPHIC FEATURES ARE SHOWN.
 3. STREET NAMES ARE FOR REFERENCE PURPOSES ONLY AND DO NOT REPRESENT AN OFFICIAL MAP FOR DETERMINING THE STATUS OF PUBLIC AND PRIVATE WAYS.
 4. ZONING INFORMATION TAKEN FROM PLAN ENTITLED ZONING DISTRICT MAP OF THE TOWN OF COHASSET, MASSACHUSETTS, DATED MARCH 2002.
 5. THE WATER RESOURCE DISTRICT, ESTABLISHED AS THE OVERLAY DISTRICT SHOWN ON THIS ZONING MAP, IS BASED ON THE PRIOR OFFICIAL WATER RESOURCE DISTRICT MAP DATED MARCH 2001, WITH MINOR MODIFICATIONS TO THE DISTRICT LINE BY NORFOLK RAM GROUP, LLC ENVIRONMENTAL ENGINEERS OF PLYMOUTH, MA, TO ADJUST PORTIONS OF THE DISTRICT LINE THAT DEFINE THE LILY POND AND AARON RIVER RESERVOIR WATERSHEDS SO AS TO BE CONSISTENT WITH THE THREE METER TOPOGRAPHIC MAPS PUBLISHED BY THE UNITED STATES GEOLOGICAL SURVEY IN 1984.
 6. FOR ADDITIONAL INFORMATION REGARDING ZONE BOUNDARIES THAT DO NOT FOLLOW PHYSICAL FEATURES SUCH AS HYDROGRAPHY OR PROPERTY LINES, PLEASE REFER TO NOTES ON FILE WITH THE TOWN CLERKS OFFICE.



REVISION	REVISION TYPE	DATE
1	ADDED 2003, 2007, AND 2011 ZONING UPDATES	6/2014
2	Revised	11/2014
3	ADDED Harbor Village Business Overlay District	4/2019
4	Zoning Reclassification of the Whitney Spur Rail Trail	5/2021

This is to certify that this is the zoning map of the Town of Cohasset, Massachusetts, referred to in the zoning bylaw of the Town of Cohasset, Massachusetts, which was adopted by the Town Meeting commencing, May 24, 2021.

Carol St. Pierre, CMMC - Town Clerk

- Legend**
- HARBOR VILLAGE BUSINESS OVERLAY DISTRICT
 - TOWN OWNED PROPERTY
 - HIGHWAY BUSINESS DISTRICT - 10,000 s.f. Minimum Lot Size
 - VILLAGE BUSINESS DISTRICT - 5,000 s.f. Minimum Lot Size
 - RESIDENCE A DISTRICT - 18,000 s.f. Minimum Lot Size
 - RESIDENCE B DISTRICT - 35,000 s.f. Minimum Lot Size
 - RESIDENCE C DISTRICT - 60,000 s.f. Minimum Lot Size
 - DOWNTOWN BUSINESS DISTRICT - 5,000 s.f. Minimum Lot Size
 - LIGHT INDUSTRY DISTRICT - 80,000 s.f. Minimum Lot Size
 - WATERFRONT BUSINESS DISTRICT - N/A
 - TECHNOLOGY BUSINESS DISTRICT - 80,000 s.f. Minimum Lot Size
 - OPEN SPACE DISTRICT
 - WATER BODIES (ZONED INLAND AND/OR TIDAL WATER BODIES)
 - WATER RESOURCE DISTRICT