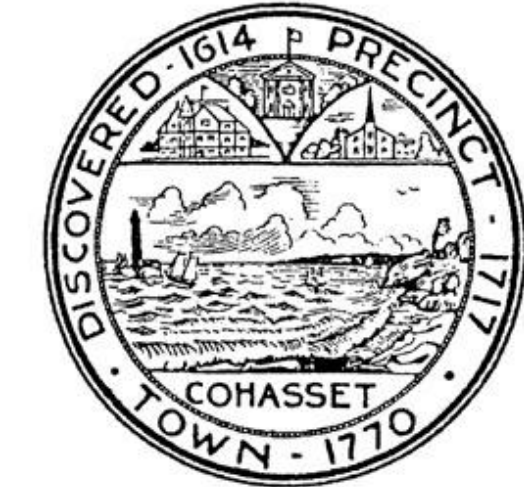




1 Site Plan - Existing
1" = 30'-0"



**Cohasset Town Hall -
Schematic Design**
41 Highland Ave.
Cohasset, MA
Town of Cohasset

**NOT FOR
CONSTRUCTION**

Date: 7/07/17
Scale: 1" = 30'-0"
Drawn By: JMC
Reviewed By: DLM
Project No: 1762.00



324 Broadway, P.O. Box 45248
Somerville, MA 02145
617.625.8901 - www.mckinleykalsow.com

Site Plan - Existing

No.

EX 0.1



**Cohasset Town Hall -
Schematic Design**
41 Highland Ave.
Cohasset, MA
Town of Cohasset

**NOT FOR
CONSTRUCTION**

Date: 7/07/17
Scale: 1/8" = 1'-0"
Drawn By: JMC
Reviewed By: DLM
Project No: 1762.00

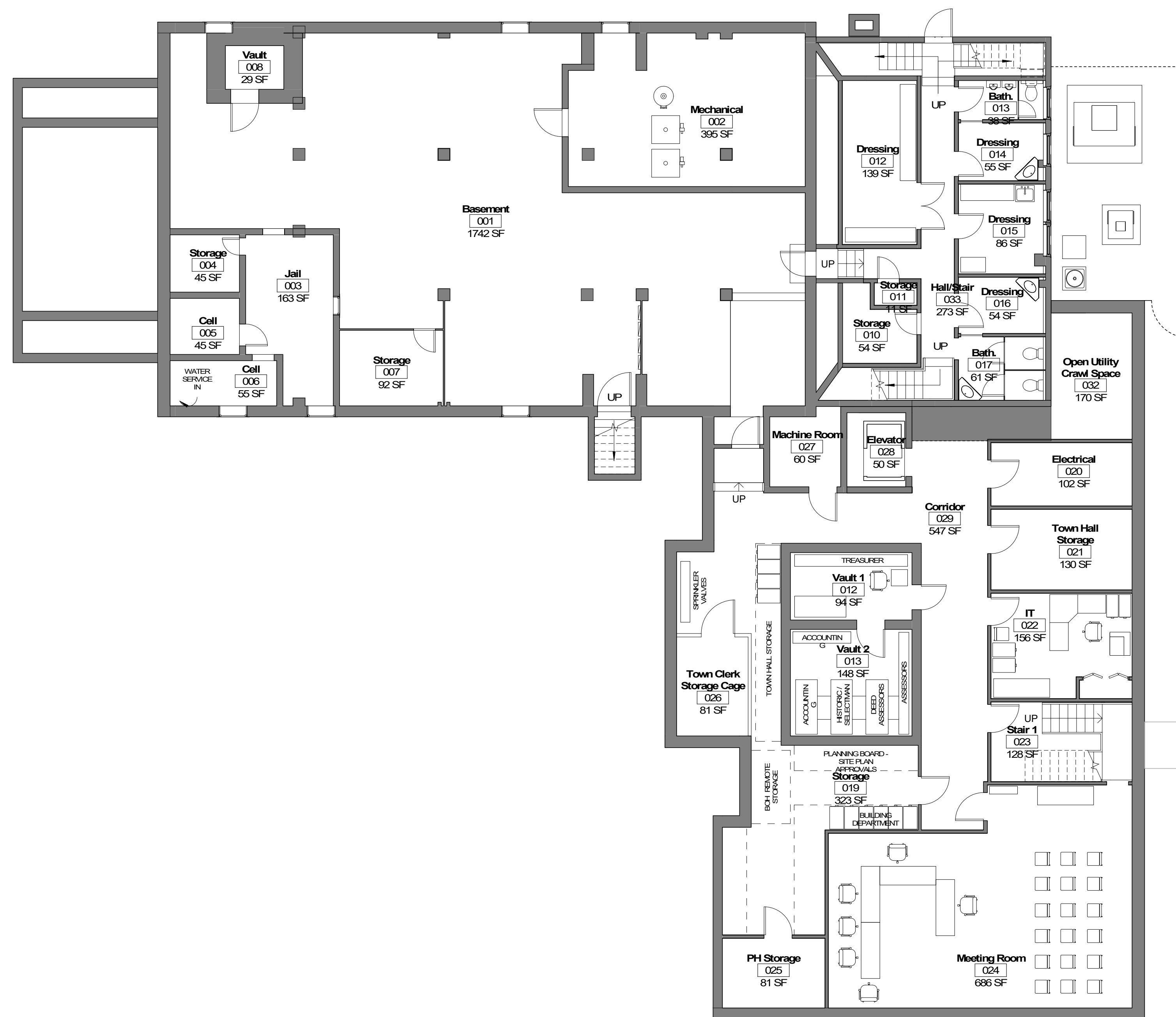


324 Broadway, P.O. Box 45248
Somerville, MA 02145
617.625.8901 - www.mginleykalsow.com

**Existing Basement
Plan**

No.

EX1.0



1 Basement Plan - Existing
1/8" = 1'-0"

Gross Square Footage: 7201 sq ft



**Cohasset Town Hall -
Schematic Design**
41 Highland Ave.
Cohasset, MA
Town of Cohasset

**NOT FOR
CONSTRUCTION**

Date: 7/07/17
Scale: As indicated
Drawn By: JMC
Reviewed By: DLM
Project No: 1762.00

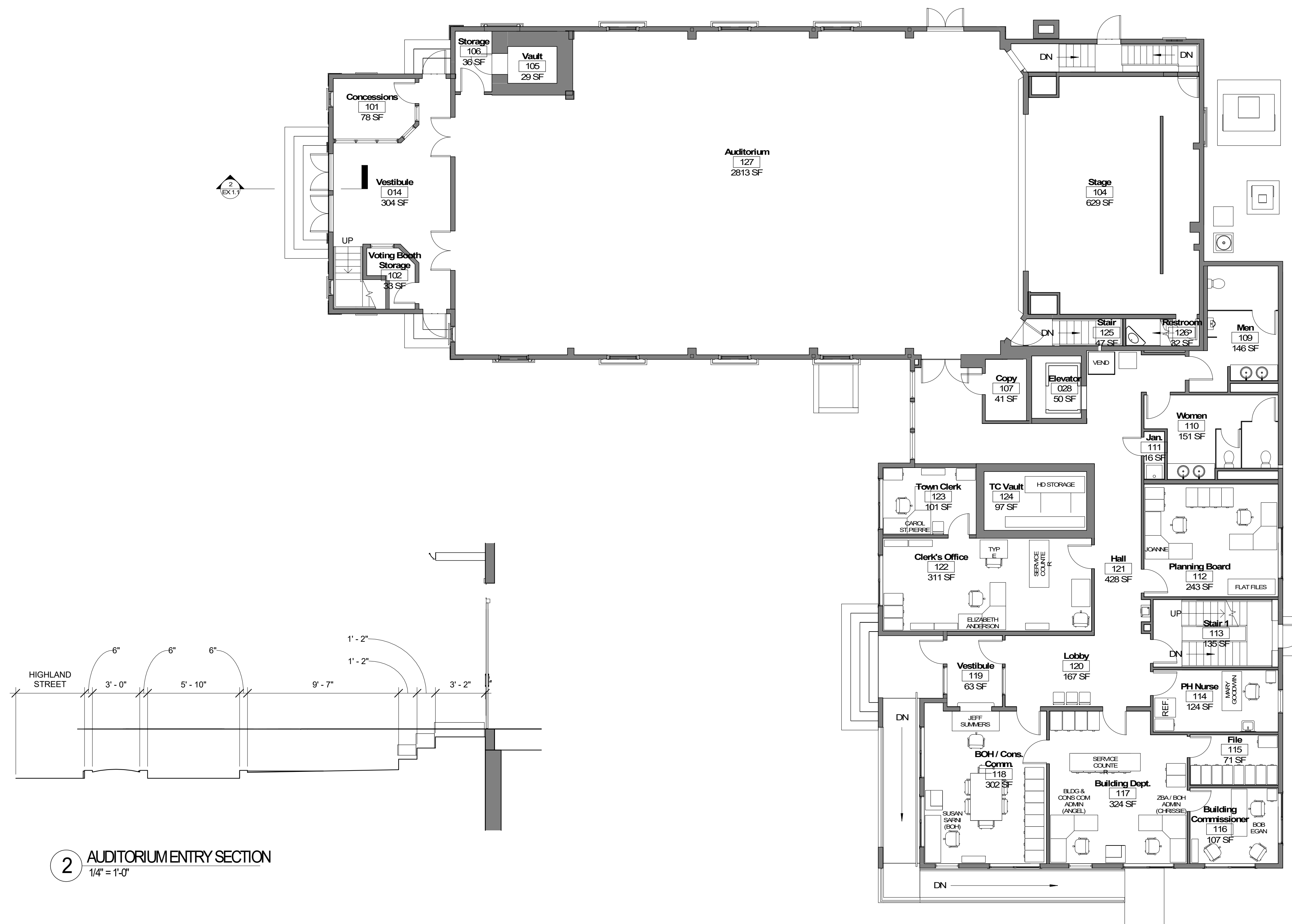


324 Broadway, P.O. Box 45248
Somerville, MA 02145
617.625.8901 - www.mginleykalsow.com

**Existing First Floor
Plan**

No.

EX 1.1



2 AUDITORIUM ENTRY SECTION
1/4" = 1'-0"

Gross Square Footage: 7663 sq ft

1 First Floor Plan - Existing
1/8" = 1'-0"



Cohasset Town Hall - Schematic Design

41 Highland Ave.
Cohasset, MA

Town of Cohasset

NOT FOR
CONSTRUCTION

Date: 7/07/17
Scale: 1/8" = 1'-0"
Drawn By: JMC
Reviewed By: DLM
Project No: 1762.00



324 Broadway, P.O. Box 45248
Somerville, MA 02145
617.625.8901 - www.mcginleykalsow.com

Existing Second
Floor Plan

No.

EX1.2

